

Creating Internal Comfort

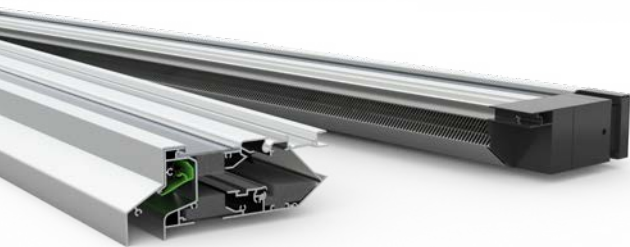
Integrated design solutions for the optimal indoor climate



DUCO

We inspire at www.duco.eu

Window ventilation from DUCO



SkyVent SR (AK+)

In the SkyVent SR, an aluminium outer section has been provided for maximum wind and water resistance. Ideal for use in high-rise buildings up to a height of 70 metres.

A variant was specifically designed for the UK in line with current regulations: the SkyVent UK. Here the internal ventilation flap is limited at the equivalent area to 5000, 7500 or 10000 mm. This is always performed in a sound-absorbing AK version.

STANDARD WINDOW VENTS

DucoPlus 45 & DucoPlus 60

Minimum glass reduction DucoPlus 45 is a controllable, aluminium glazed-in window ventilator featuring a curved canopy that guarantees superior weatherability. The positive-action inner tip directs the flow of incoming air upwards.

DucoFlat 80 SR

DucoFlat 80 SR series have been specifically engineered for integration in the fixed and sliding panes of a sliding window or a sliding door. The window ventilator features just 80 mm glass reduction.

DucoKlep 80

DucoKlep 80 SR is a self-regulating flap ventilator with a completely flat inner grid. This makes it especially suitable for applications in the fixed pane of a sliding window. The vent can optionally be equipped with a thumb control handle.



SkyMax SR

DucoMax SR is a self-regulating, acoustic vent (sound attenuating ventilator), specifically engineered for situations exposed to high levels of noise disturbance. The various types are attractively designed and offer excellent acoustic performance. The SkyMax SR is an upgraded version of the DucoMax SR making it applicable to heights up to 70 meter.



Louvre wall systems for every requirement

DUCO has developed a comprehensive range of louvre wall systems: Vandal-proof, pierce-proof, water-repellent, for large flows, sound-absorbing or as simple cladding.



RC2: DUCO's patented intrusion-resistant solution

DUCO can offer their innovative intrusion-resistant solution to improve security, being suitable for both LouvreWall and LouvreDoor ranges. Tested in accordance with European Standard (EN1627 & NEN 5096C+2), it is certified to Resistant Class 2.

DucoWall Classic W 50 & 130 HP

The distinctive shape of this "High Performance" (HP) louvre wall system ensures that it will be exceptionally resistant, even in extreme weather conditions. The DucoWall Classic HP can boast stunning figures, especially when it comes to water resistance. Aesthetic and a great tool for very effective ventilation.



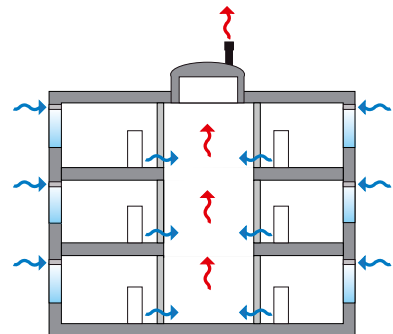
DucoWall Screening 70

DucoWall Screening 70 is a louvre wall system with a very high span and high air permeability. The louvres are fixed directly to the retaining profile (Direct Clip). As only a few brackets are required, the louvre wall can be assembled **very quickly**. DucoWall Screening 70 can be installed in different louvre increments (75 / 112 / 150 mm).



Intensive ventilating Cooling

High-performance ventilating (night-time) cooling ensures pleasant, fresh buildings thanks to **natural ventilation**. Cool outdoor air is stored in the thermal mass. This mass releases the cooling again to prevent the whole building from heating up so quickly.



- > Fresh air is supplied
- > Warm air is expelled



DucoGrille

With large **weather louvres** for effective ventilation, DUCO provides a natural and free alternative for air conditioning systems with high energy consumption. Large amounts of cooler air help to cool the interior by up to five degrees at night. It ranges from the "**Classic**" standard louvres to "**Close**" lockable louvres and the "**Acoustic**" sound-absorbing models to the extraordinarily robust "**Solid**" louvres, which can optionally be designed to be vandal-proof and burglar-proof.

DucoGrille NightVent

The DucoGrille NightVent is a glass-replacing motorised ventilation hatch. The ventilation hatch consists of a module with two essential sub-parts. From the outside, the DucoGrille NightVent is protected by a window grille with perforated louvres that keep insects out. There is a sound-insulating flap from the inside.

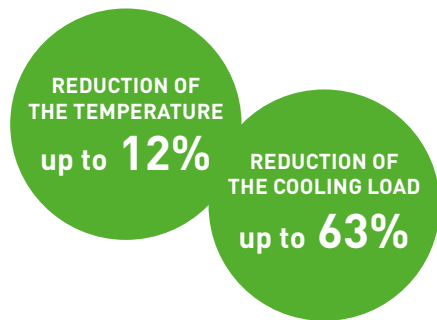
The outside grille is also available in a vandal-proof and burglar-proof version.





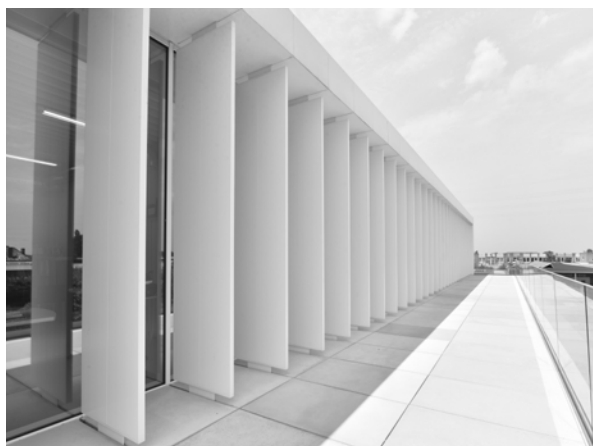
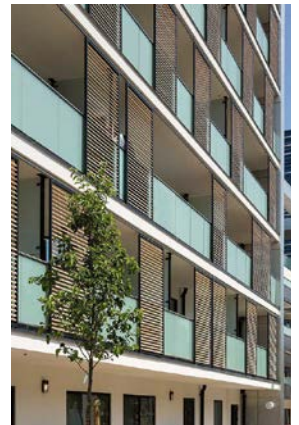
Architectural solar shading

Forget white roofs, solar shading glass, roller blinds or curtains: go for **architectural sun control systems** in combination with very effective ventilation - that way you're guaranteed to get the best result.



DucoSun

The DucoSun sun control systems give you plenty of options. There are systems **with fixed or adjustable louvre blades** with a discreet or eye-catching design, with horizontal and vertical lines. Your decision for one of the many solar shading models depends on how much you want to spend, the available technical options and, of course, your own aesthetic requirements.



DucoSlide

DucoSlide is an architecturally designed solar shading system consisting of sliding panels that add **aesthetic value** to any façade. Thanks to the numerous combinations, you can design your façade entirely according to your taste.

With the DucoSlide product range you have a choice of different frame types, louvre blades and sliding systems.

DID YOU KNOW THAT...

A COMBINATION OF VENTILATION
AND SOLAR SHADING CAN
REDUCE THE COOLING
LOAD BY UP TO 63%?



DID YOU KNOW THAT...

SOLAR SHADING CAN REDUCE THE
AVERAGE TEMPERATURE BY 12%?



HOME OF OXYGEN



Contact us by telephone on +32 58 33 00 66 or by e-mail to info@duco.eu

We will be happy to provide you with further information about our products and innovations.



101,000 m² of OXYGEN

DUCO

We inspire at www.duco.eu